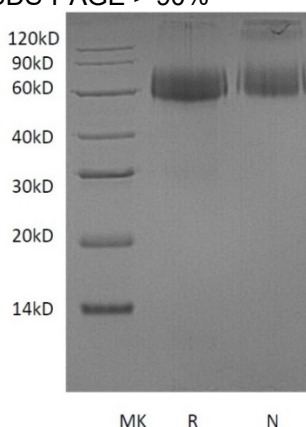


Recombinant ST2, 500 µg

| | |
|--------------------------------|--|
| Catalog number | 710047 |
| Description | Recombinant human ST2 also known as interleukin-1receptor-like 1 antigen is produced by mammalian expression system and the target gene encoding Lys19-Phe328 is expressed with a 6His tag at the C-terminus. Predicted molecular weight: 60 kDa. |
| Amino acid sequence | KFSKQSWGLENEALIVRCPRQGKPSYTVDWYYSQTNKSIPTQERNRVFASGQLLKFLPAAVADSGIYTCIVRSPTFNRTGYANVTIYKKQSDCNVPDYLMYSTVSGSEKNSKIYCPTIDLYNWTAPLEWFKNCQALQGSRYRAHKSFLVIDNVMTEDAGDYTCKFIHNENGANYSVTATRSFTVKDEQGFSLFPVIGAPAQNEIKEVEIGKNANLTCSACFGKGTQFLAAVLWQLNGTKITDFGEPRIQQE EGQNNQSFSNGLACLDMVLRIADVKEEDLLLQYDCLALNLHGLRRHTVRLSRKNPSKECFVDHHHHHH |
| Product host | Human cells |
| Product formulation | Lyophilized |
| Product buffer solution | 20 mM Na-phosphate, pH 7.4, 150 mM NaCl |
| Reconstitution | Reconstitute lyophilized protein with 1000 µl of deionized water |
| Shelf life and storage | -20 °C |
| Analyte description | ST2 is an interleukin-1 family receptor expressed in the heart. ST2 protein has two isoforms: a soluble (sST2) and membrane- bound form. Patients with heart failure and elevated ST2 protein levels in the blood are at risk for heart failure progression. |
| Product concentration | 0.5 mg/ml when reconstituted with 1000 µl of deionized water |
| Purity | SDS-PAGE > 90% |



N: Non-reducing
R: Reducing
MK: Protein Molecular Weight Marker

| | |
|--------------------------|---|
| Antibodies tested | Anti-h ST2 10201: + Anti-h ST2 10202: + Anti-h ST2 10203: + Anti-h ST2 10204: + Anti-h ST2 10205: + Anti-h ST2 10206: + Anti-h ST2 10207: + |
|--------------------------|---|

